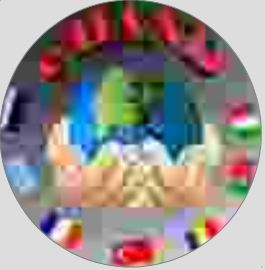


Bring the research into classroom

A holistic experience, result of collaboration between School and University

- ✓ to provide students with practical and real-life problems
- ✓ to learn the scientific method
- ✓ to implement changes at the curriculum level
- ✓ to educate students to become responsible citizens





Bring the research into classroom

Central Topic

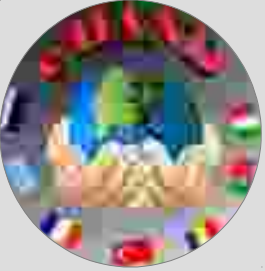
It involves more subjects and cut across a broad range of subjects matters

It promotes active citizenship and the participation in social and political life



It allows students to work starting from real life problems, especially local problems

It engages students



eHAND

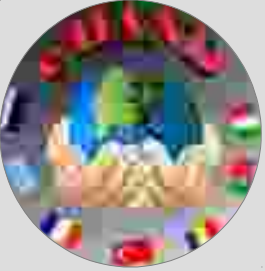
effects of **H**uman **A**ctivities on **N**atural **D**isasters

Seven European schools



Our aims: the achievement of the goals of the Europa 2020 strategy, of Agenda 2030 with a view to EXPO2020.

- focus on local problem
- collaboration with Research Centers and Universities
- analysis of own areas
- conferences and activities at the University
- laboratory and/or outdoor investigations



EHAND

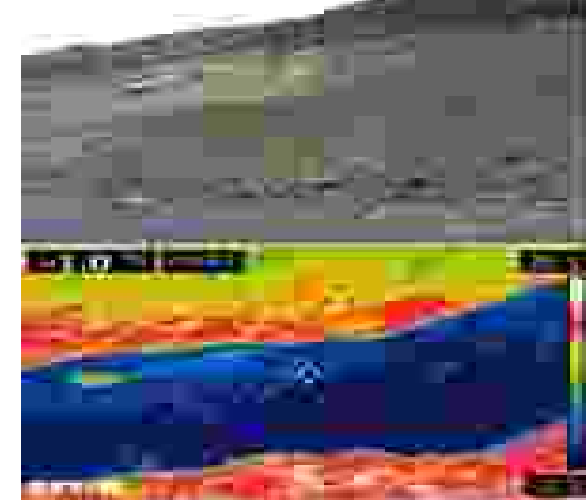
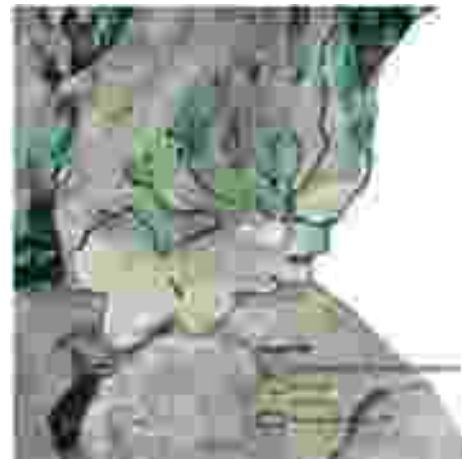
Italy experience



Hydrogeological instability due to high urbanisation and mostly related to issues in mountain area (floods, landslides, permafrost thaw, glaciers melt..)

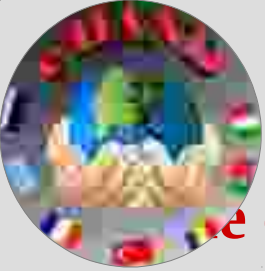


Research process led by researchers and professors of 'Università degli studi di Milano', 'Università dell'Insubria', UNIMONT Centre of excellence. involving the subjects Math, Physics, Science, History, ICT and English



Students had to plan their own projects about a sustainable development





Conclusions

collaboration with Universities and Research Institutions allowed..

- students to learn the research method (importance of formulating ipohthesis, analyzing data, interpreting their own observation) to increase motivation and interest in science
- teachers and students to be trained about the cutting edge technologies and research
- researcher to have help in gathering and analyze data. In University guidance
- communities to benefit because of the promotion of ethical value, active citizenship and solution of local issues

