

ST.PAUL'S MISSIONARY COLLEGE



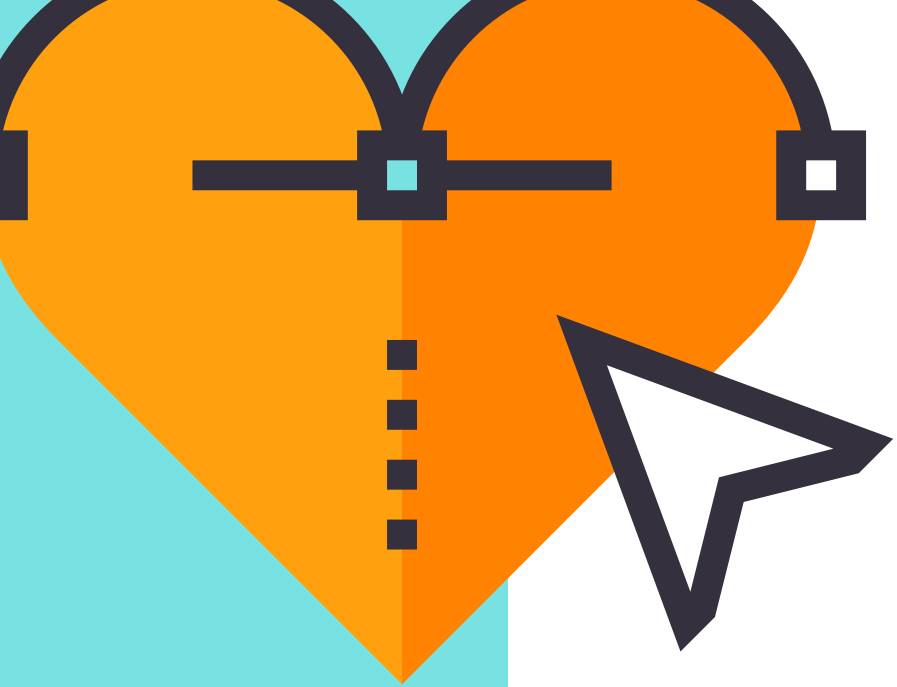
# STEM PRO-PANEL

Ms.Alexia  
Micallef Gatt

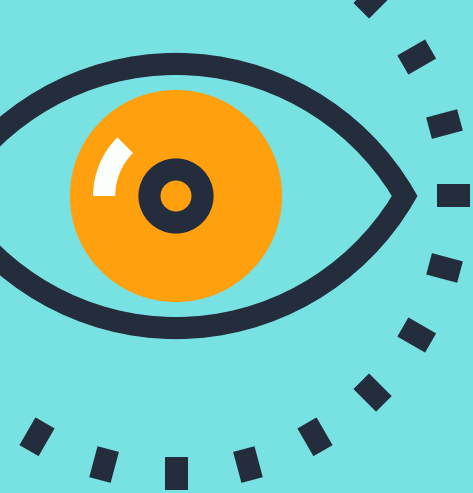
# WHAT IS... **STEM**

**SCIENCE -  
TECHNOLOGY -  
ENGINEERING -  
MATHEMATICS**



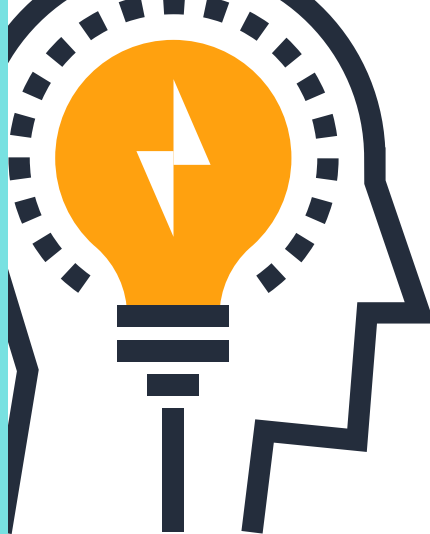


**WHAT IS THE  
AIM OF TODAY?**



# OBSERVE

**STEM SUBJECTS**  
---> **JOBS**



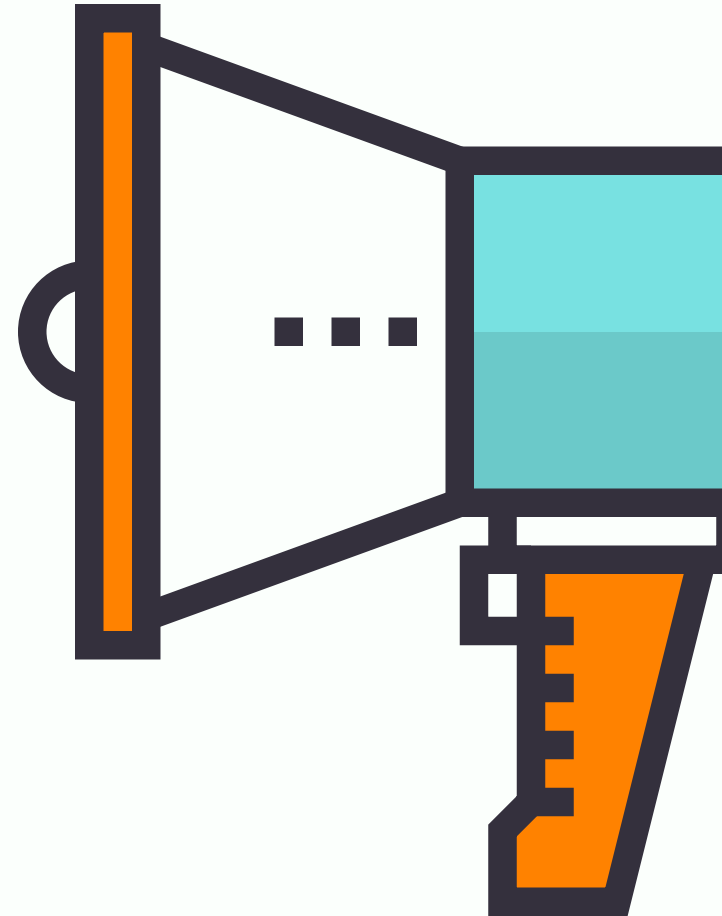
# INSPIRE

**YOU** TO PURSUE A  
**STEM CAREER**

# HOW IS IT GOING TO WORK?

PART 1 - INTRODUCTION

PART 2 - INTERVIEWS





ST.PAUL'S MISSIONARY COLLEGE

---

**THANK YOU!**  
**TO OUR PRO-S**

---

Ms.Alexia



# GARY HILI

## GAME DEVELOPER





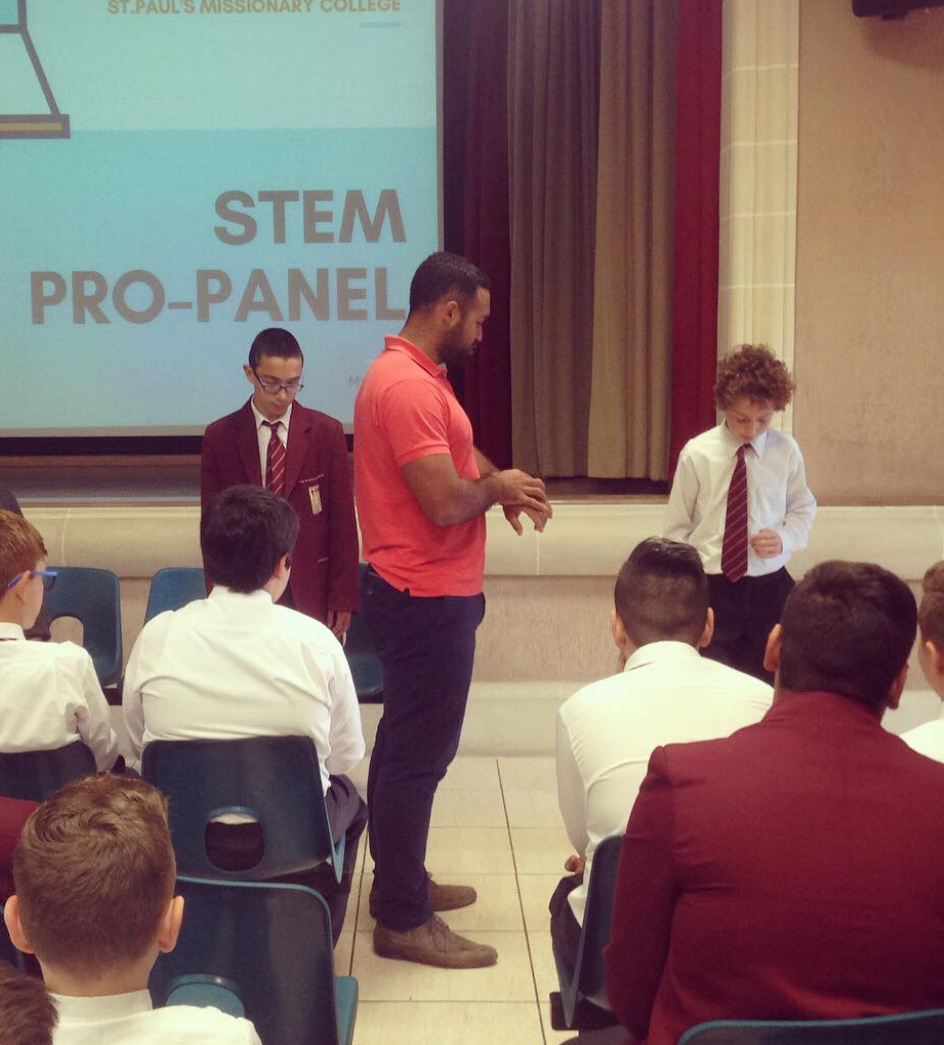


# MICHAELA SCIBERRAS

## PHARMACEUTICS QUALITY CONTROL TEAM LEADER



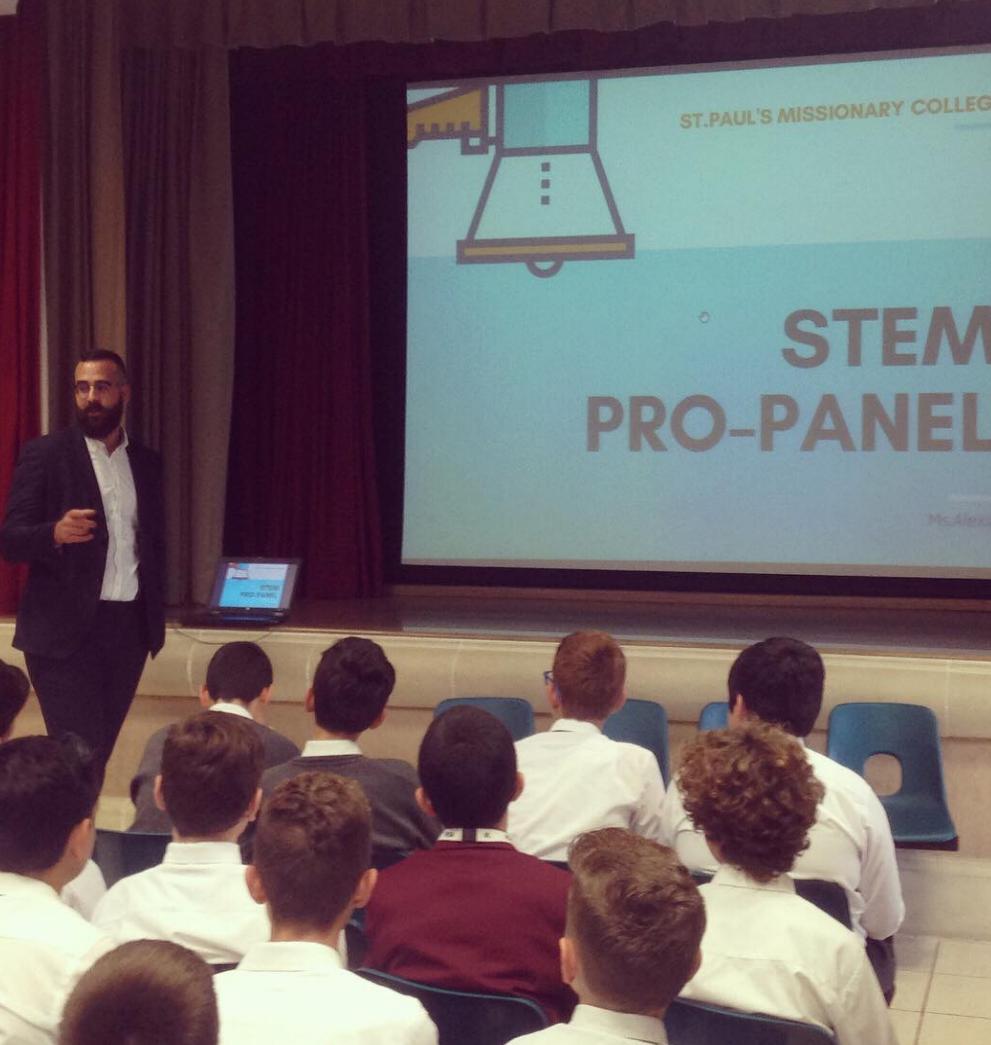




# MATTHEW CAMILLERI

## PHYSIOTHERAPIST & ENTREPRENEUR





# AIDAN MICALLEF

## STATISTICIAN







ST.PAUL'S MISSIONARY COLLEGE



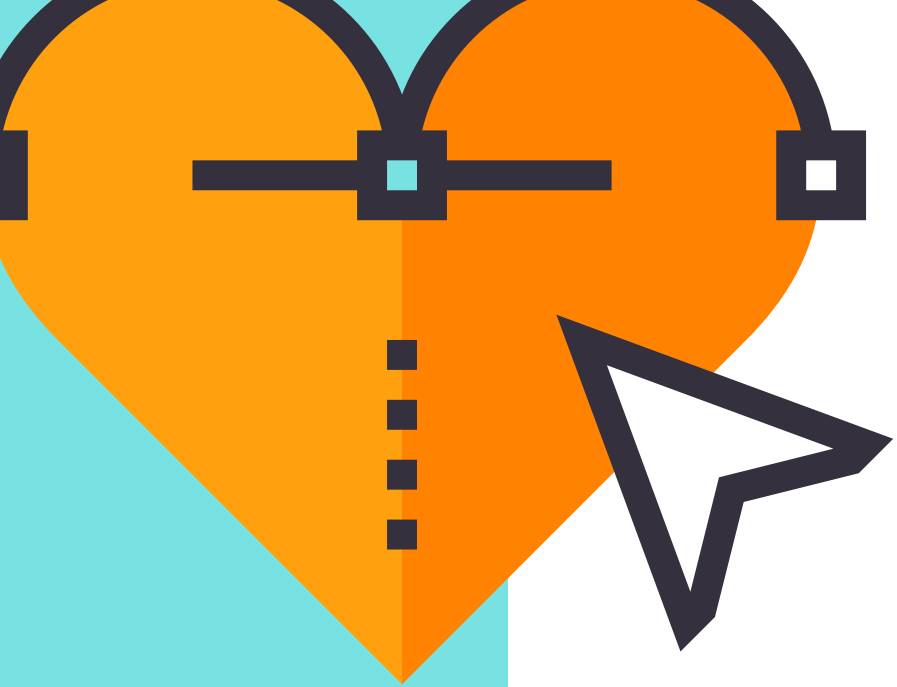
# STEM PRO-PANEL

Ms.Alexia  
Micallef Gatt

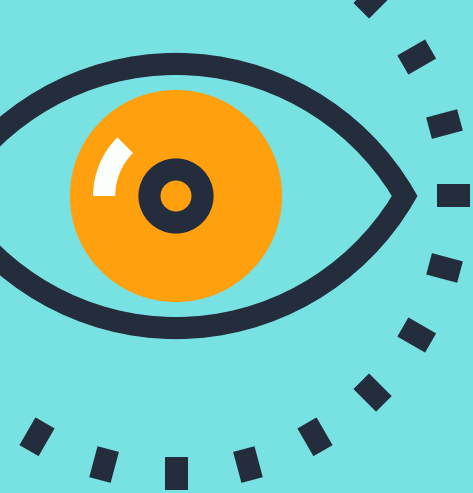
# WHAT IS... **STEM**

**SCIENCE -  
TECHNOLOGY -  
ENGINEERING -  
MATHEMATICS**



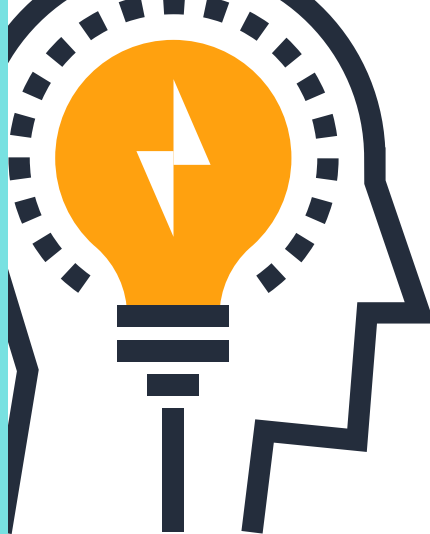


**WHAT IS THE  
AIM OF TODAY?**



# OBSERVE

**STEM SUBJECTS**  
---> **JOBS**



# INSPIRE

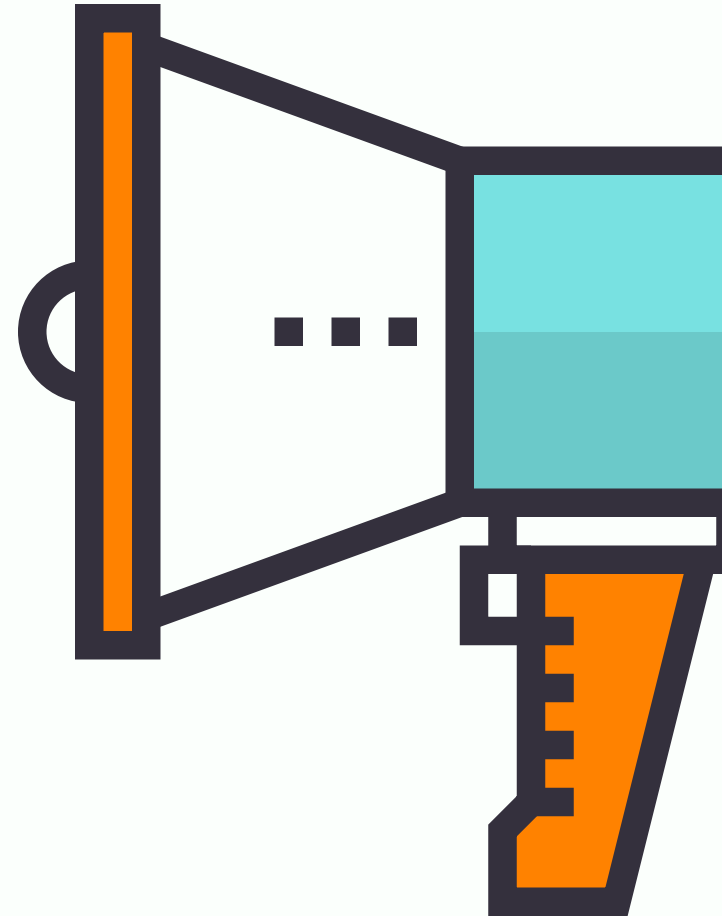
**YOU** TO PURSUE A  
**STEM CAREER**



# HOW IS IT GOING TO WORK?

PART 1 - INTRODUCTION

PART 2 - INTERVIEWS





ST.PAUL'S MISSIONARY COLLEGE

---

**THANK YOU!**  
**TO OUR PRO-S**

---

Ms.Alexia



# GARY HILI

## GAME DEVELOPER





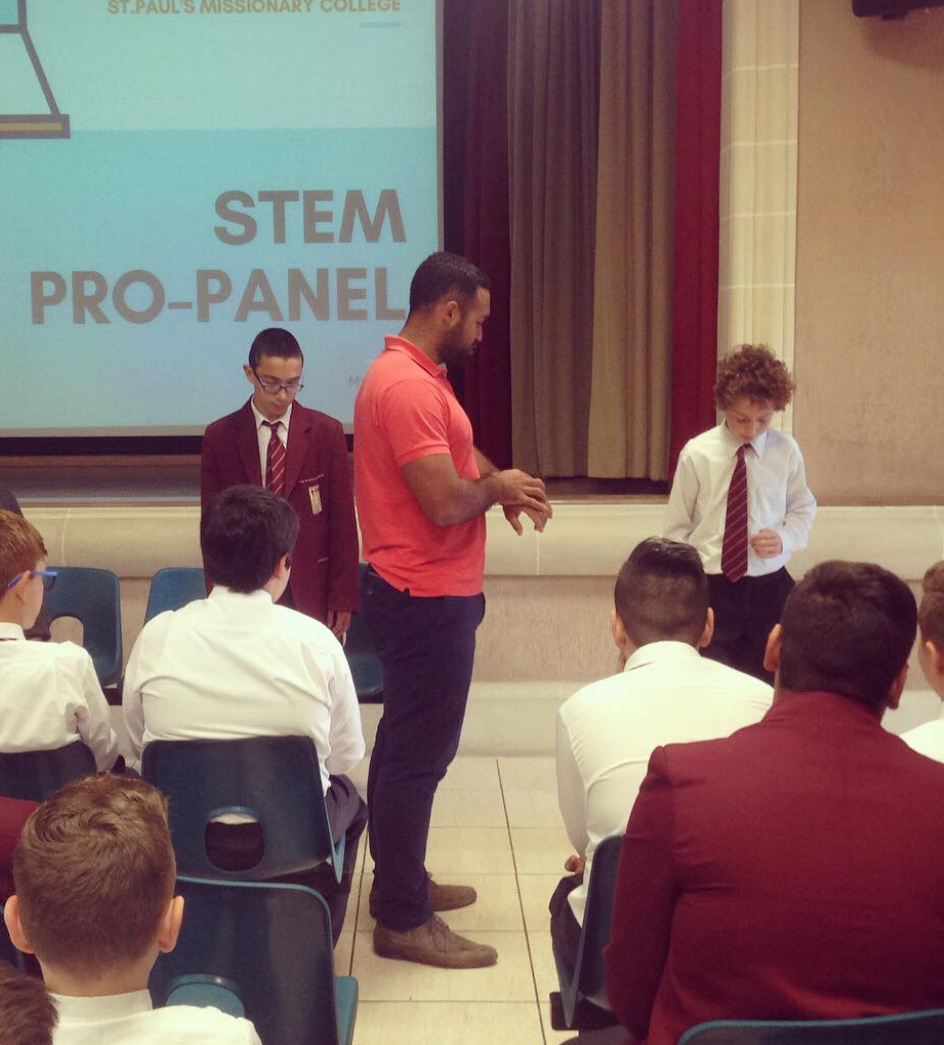


# MICHAELA SCIBERRAS

## PHARMACEUTICS QUALITY CONTROL TEAM LEADER



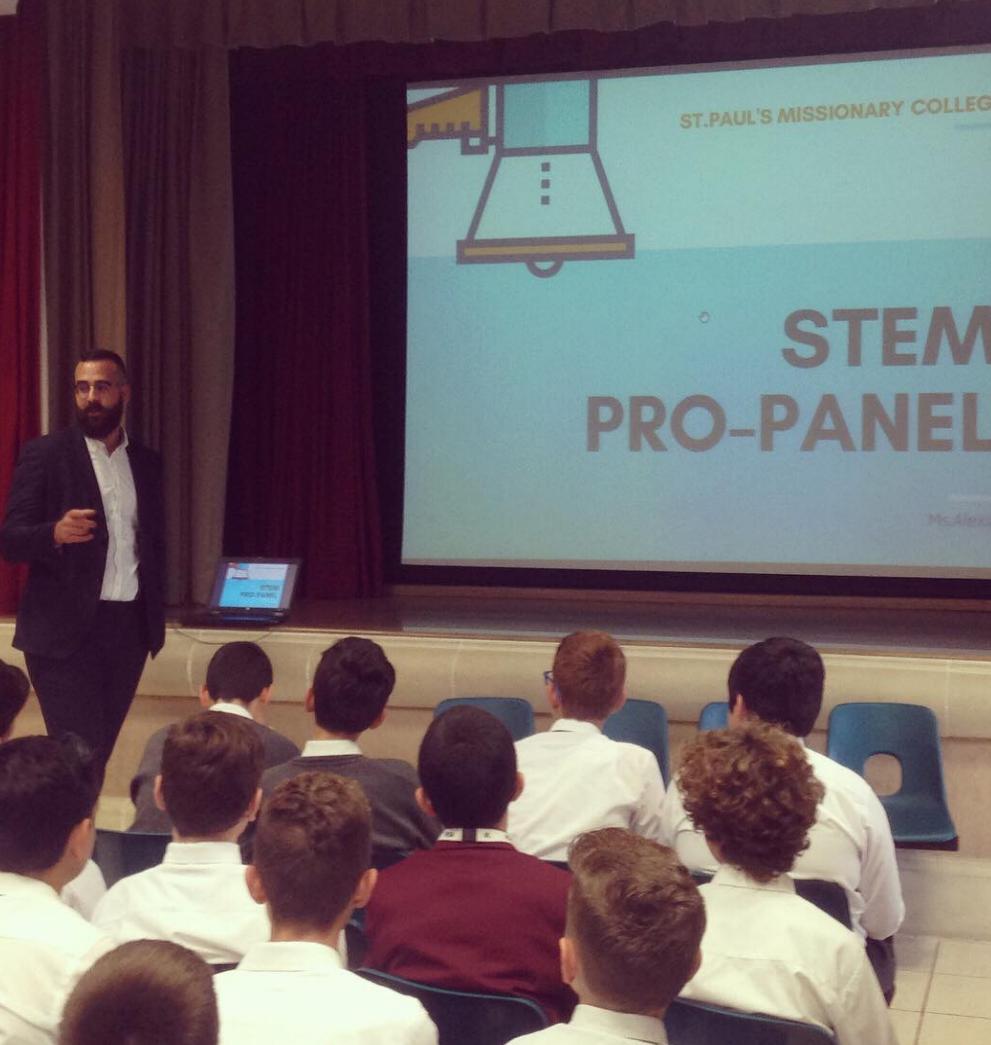




# MATTHEW CAMILLERI

## PHYSIOTHERAPIST & ENTREPRENEUR





# AIDAN MICALLEF

## STATISTICIAN

